

ROSSO-8CX250

8" - Coaxial - 500W - 94dB

AUDIENCE



- Integrated high precision machined HF horn
- Cast aluminum chassis and HF rear chamber
- Common HF/LF ferrite magnet motor structure
- Minimum damping fiber glass voice coil former
- Ribbon voice coil wire for high efficiency of HF section
- Bifilar woofer voice coil technology for optimized BL and lower mass
- Weather-proof coated paper cone made in house with sisal and manila fibers

Dimension & Weight

Overall Diameter	208 mm (8.19 in)
Bolt Circle Diameter	195 mm (7.68 in)
Baffle Cutout Diameter	179.2 mm (7.05 in)
Mounting Depth	119.2 mm (4.69 in)
Flange and Gasket Thickness	6.8 mm (0.27 in)
Net Weight	4.32 Kg (9.52 lb)
Shipping Box	232 x 222 x 169 mm (9.13 x 8.74 x 6.65 in)
Gross Weight	5 Kg (11.02 lb)

HF-Replacement Diaphragm

1P000OPSB032

LF-Recone Kit

1P000OPSB043

NOTES :

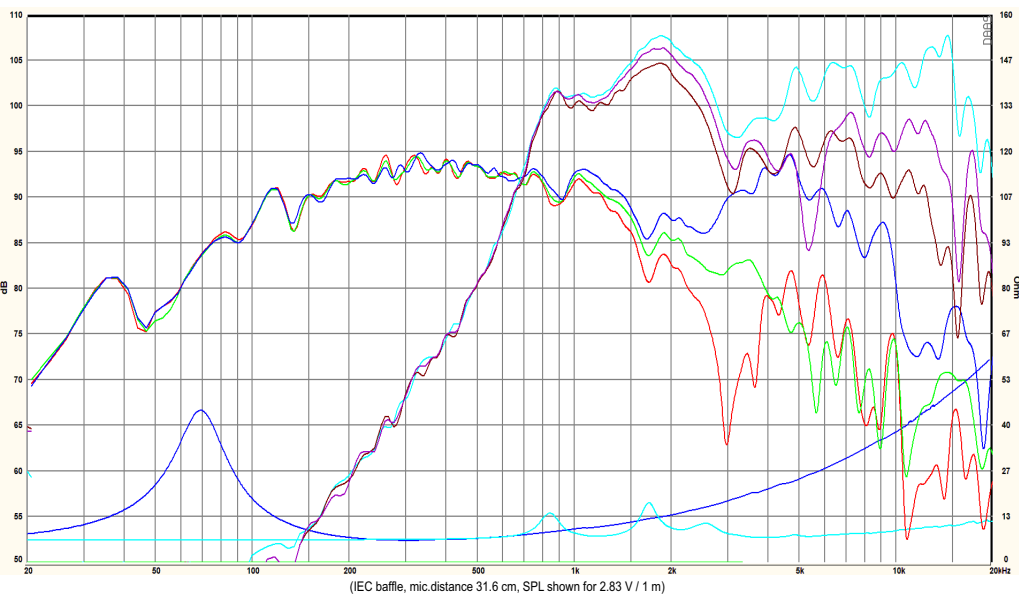
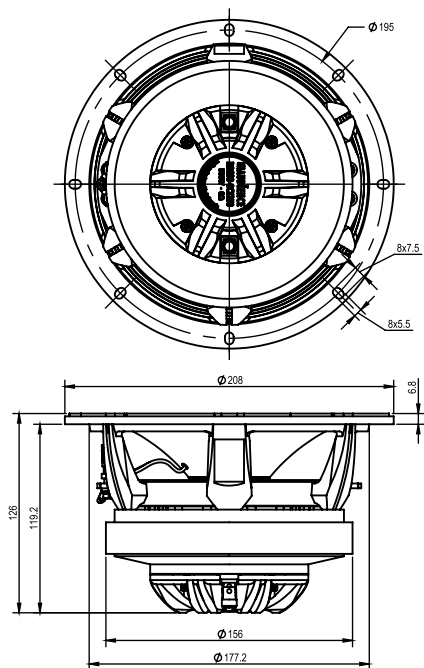
- (1) AES standard, test mode with continuous pink noise signal (6 dB crest factor; 2 hours) within the Fo to 10Fo power calculated on rated minimum impedance. Loudspeaker in free air
- (2) Maximum power is defined as 3dB greater than nominal power
- (3) Measured average within the frequency range (100Hz - 2kHz)
- (4) $X_{max} = ((Winding\ depth - magnetic\ gap\ depth)/2) + (magnetic\ gap\ depth/3)$
- (5) Maximum excursion (p-p) before permanent damage
- (6) T/S parameters measured on drive units that are broken in

Specs

	LF Unit	HF Unit
Nominal Impedance	8 Ohm	8 Ohm
Minimum Impedance	6.2 Ohm	7.1 Ohm
AES Power Handling (1)	250 W	50 W
Maximum Power Handling (2)	500 W	100 W
Sensitivity (2.83V/1m) (3)	94 dB	102 dB
Frequency Range	70 - 9200 Hz	1100 - 19400 Hz
Voice Coil Diameter	49.5 mm (1.95 in)	44.3 mm (1.74 in)
Winding Material	EISVCAW	PSVCAR
Former Material	Till	Kapton
Winding Depth	13.4 mm	2.25 mm
Magnetic Gap Depth	8 mm (0.31 in)	2.5 mm (0.1 in)
Flux Density	0.88 T	1.41 T
Magnet	Ferrite	-
Basket Material	Aluminium die cast	Aluminium die cast
Demodulation	-	-
Cone Surround (LF) / Dome (HF)	Cloth triple roll	PEEK
NET Air Volume filled by driver	2 liters	
Spider Profile	Single constant height waves	
Weather Resistant	Yes	

Thiele Small Parameters

Fs	70 Hz
Re	5.3 Ohm
Qes	0.37
Qms	2.19
Qts	0.32
Vas	15.8 liters
Sd	211.2 cm ²
Xmax (4)	5.4 mm
Xdamage (5)	24 mm
Mms	20.8 g
Bl	11.4 Tm
Le	0.72 mH
Cms	0.25 mm/N
Rms	4.17 Kg/s
Eta Zero	1.39 %
EBP	189



Response Curve:

Woofer → (Blue) : on axis

Tweeter → (Cyan) : on axis

(Green) : 30° off-axis

(Purple) : 30° off-axis

(Red) : 60° off-axis

(Brown) : 60° off-axis